

Two Bedroom Apartment in Lapta

Lapta, Kyrenia West, North Cyprus

- Property Ref: 210
- Closed gated community containing over 50 apartments.
- Close to all necessities, including supermarkets and pharmacies.
- This project is 200 meters from the beach and only 2 minutes walk away from Lapta's 6 kilometer coastal walkway.
- This is the ideal holiday home, offering the definition of easy living
- A hotel and a casino are being built near the complex

Starting from
£162,500



66 m²



2 Bedrooms



1 Bathroom



6 Months
Instalments



March 2024
Completion



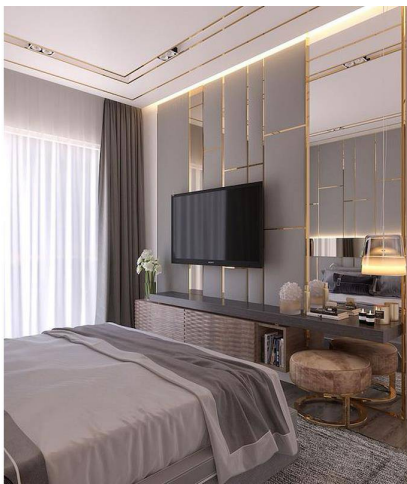
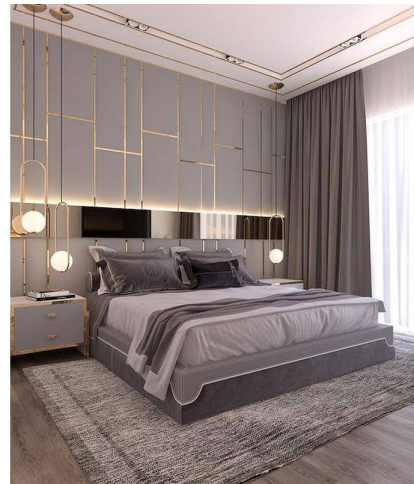
Matus Geleneky
Phone: +421902281399

DMG PROPERTY
GROUP

In Partnership With
DMG PROPERTY
GROUP

Two Bedroom Apartment in Lapta

Interior Images



Matus Geleneky
Phone: +421902281399

DMG PROPERTY
GROUP

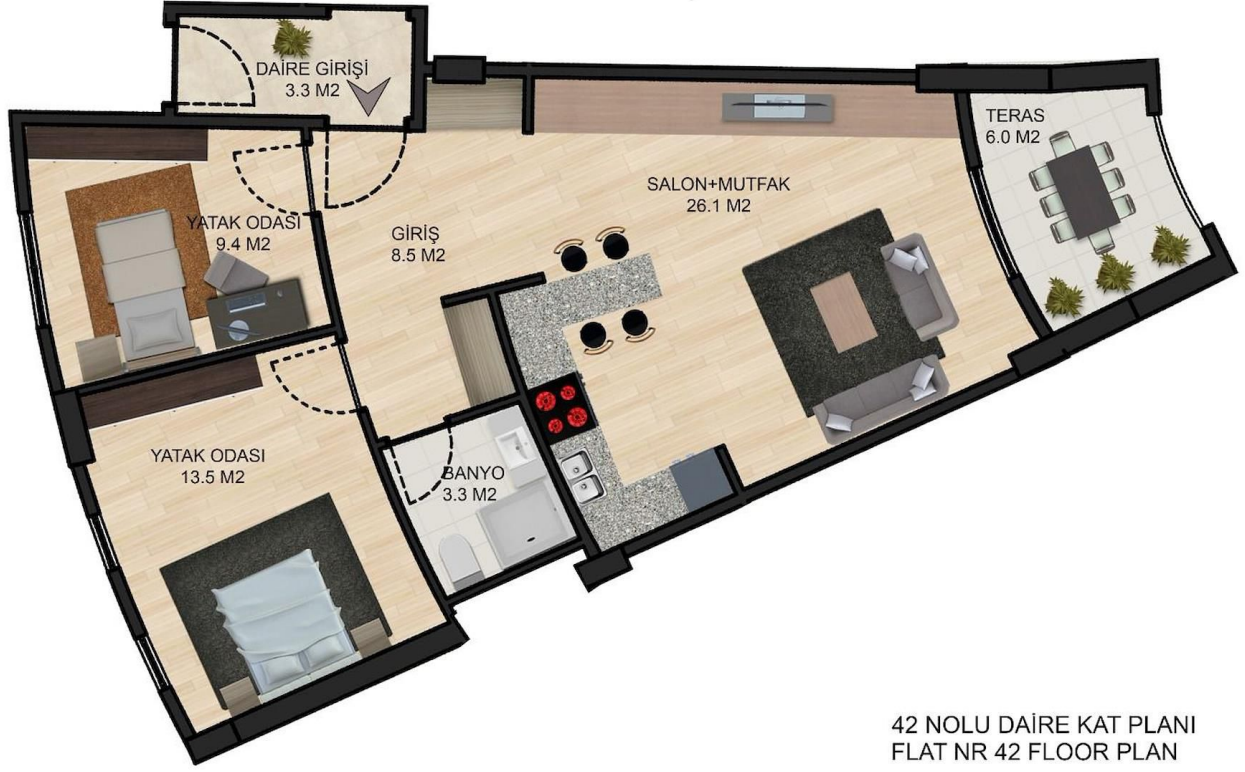
In Partnership With
DMG PROPERTY
GROUP

Two Bedroom Apartment in Lapta

Floor Plan

1. KAT.(2+1)
BRÜT: 77 M2
NET: 66.8 M2

1. FLOOR.(2+1)
GROSS: 77 M2
NET: 66.8 M2



Matus Geleneky
Phone: +421902281399

DMG PROPERTY
GROUP

In Partnership With
DMG PROPERTY
GROUP

Facilities



Children’s Playground



Fitness



Gardens (Landspaced)



Gated Community



Parking



Running Paths



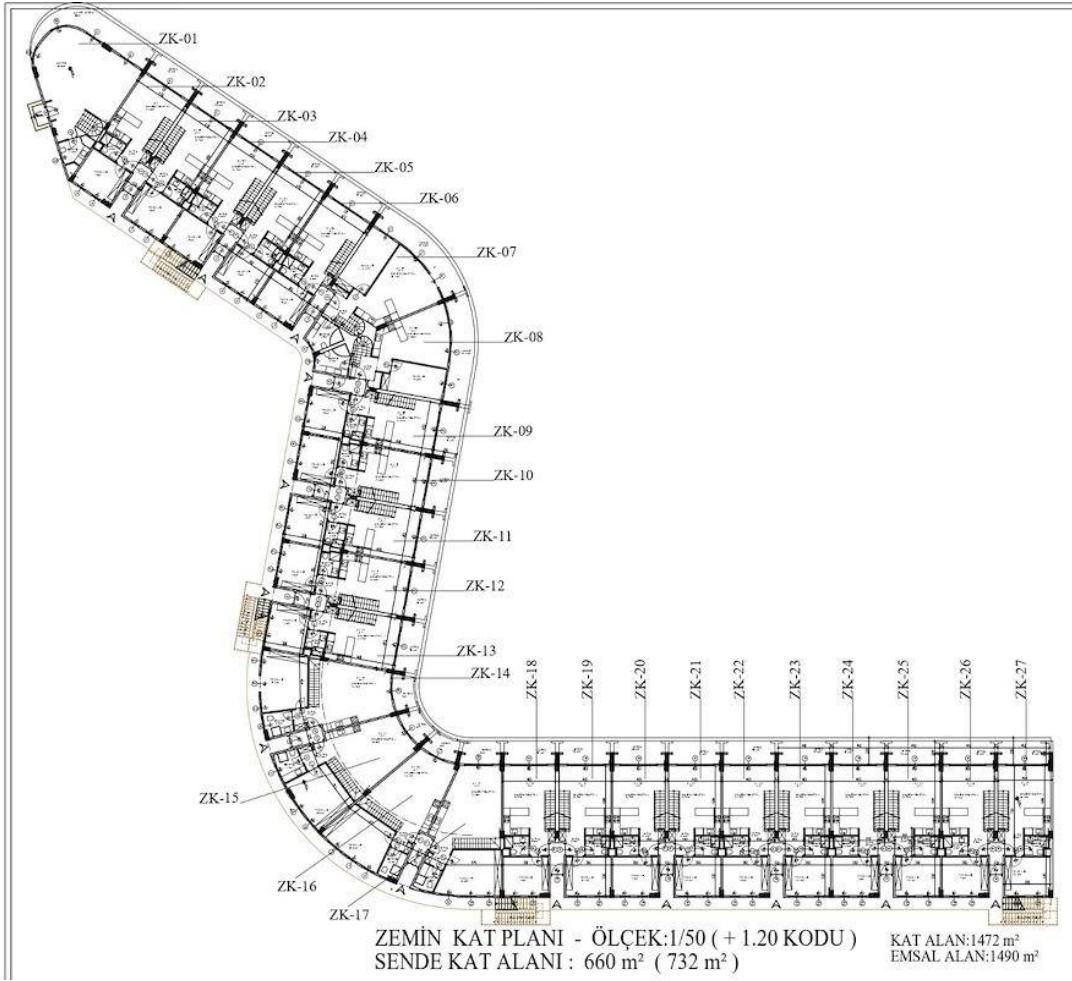
Matus Geleneky
Phone: +421902281399

DMG PROPERTY GROUP

In Partnership With
DMG PROPERTY GROUP

Site Plan

Lapta, Kyrenia West, North Cyprus



Matus Geleneky
Phone: +421902281399

DMG PROPERTY
GROUP

In Partnership With
DMG PROPERTY
GROUP

Project Location

This amazing project is located in **Lapta**, Kyrenia in North Cyprus



| | | | |
|-----------------------|--------|-------------------------|---------|
| Supermarkets | 1 min | 5 Star Hotel and Casino | 10 mins |
| Pharmacy | 1 min | Kyrenia Town Cetre | 20 mins |
| Restaurants and Cafes | 2 mins | Kyrenia State Hospital | 20 mins |
| Beach Club | 3 mins | Ercan Airport | 40 mins |
| Hiking Trails | 8 mins | Larnaca Airport | 60 mins |



Matus Geleneky
Phone: +421902281399

DMG PROPERTY GROUP

In Partnership With
DMG PROPERTY GROUP

About the Project

Beautifully set just moments from the sea in the stunning and historic Lapta, this 2-bedroom apartment offers the best in coastal living, perfectly suited for those seeking an idyllic holiday home or a permanent place in the sun.

Step inside to be wowed by the impeccable contemporary style, with floor-to-ceiling windows providing gorgeous natural light and a colour palette that combines soft tones with warm wood to create a real feeling of relaxation.

The spacious open-plan living room provides real room to stretch out and unwind, while the balcony is ideal for entertaining or relaxing. Both bedrooms are generously sized for maximum comfort and the bathroom is complete with modern fittings.

In addition to these amazing features, the owners are sure to fall in love with this project's charm, from its vibrant and diverse community to its many amenities – including the sparkling pool, the gym, the café and playground.



Matus Geleneky
Phone: +421902281399

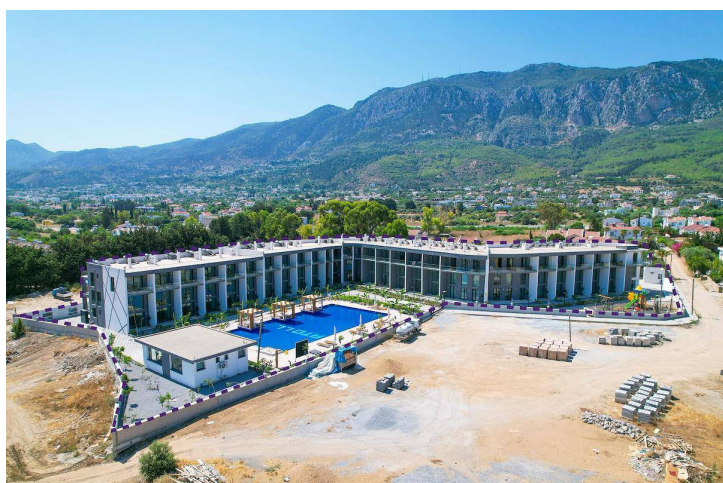
DMG PROPERTY
GROUP

In Partnership With
DMG PROPERTY
GROUP

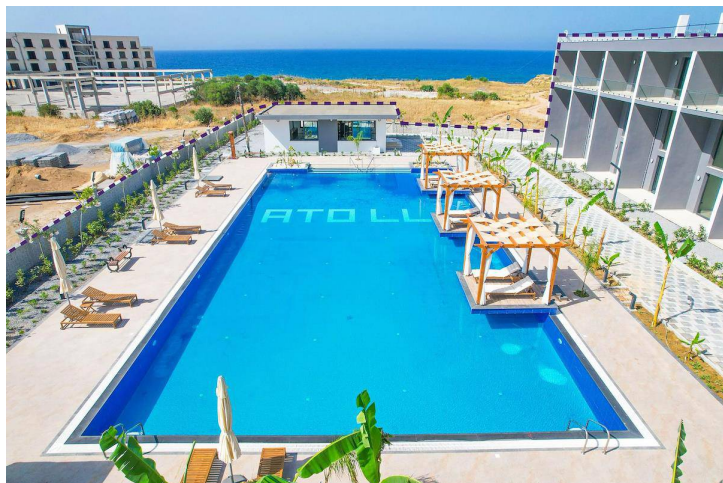
Two Bedroom Apartment in Lapta

Construction Status

July 2024



June 2024



Matus Geleneky
Phone: +421902281399

DMG PROPERTY
GROUP

In Partnership With
DMG PROPERTY
GROUP

Payment Plan For This Property Type

Property Info

Type

2 Bedroom Apartment

No

42

Block

0

Floor

2

Interior

60.80 m²

Balcony Terrace

6.00 m²

Total Living Space

66.80 m²



Matus Geleneky
Phone: +421902281399

DMG PROPERTY GROUP

In Partnership With
DMG PROPERTY GROUP

Payment Plan For This Property Type

payment plan remaining after delivery

50% payment plan remaining after delivery

| | |
|------------------------------|---------|
| 1. Installment December 2024 | £13,542 |
| 2. Installment January 2025 | £13,542 |
| 3. Installment February 2025 | £13,542 |
| 4. Installment March 2025 | £13,542 |
| 5. Installment April 2025 | £13,542 |
| 6. Installment May 2025 | £13,540 |



Matus Geleneky
Phone: +421902281399

DMG PROPERTY GROUP

In Partnership With
DMG PROPERTY GROUP